

Andromeda Systems Inc.



Continuously Pushing the Limits of Innovation, Technology, and Conventional Thinking

Maintenance & Logistics

● **About Reliability-Centered Maintenance**

Reliability-Centered Maintenance (RCM) is an analytical process used to determine an optimum maintenance program using knowledge of failure characteristics and operating experience of physical assets. RCM provides recommendations for preventive maintenance tasks, including frequency, design changes, and equipment and process improvements. RCM can be used to determine whether implementing new technology, such as predictive maintenance (PdM), or updating installed hardware is necessary or cost effective. Originally conceived in the 1960's to develop preventive maintenance programs for commercial aircraft, the RCM process has been refined and applied in virtually every industry over the past four decades.

Benefits of RCM:

- Improved operating safety and hazard risk reduction
- Reduced maintenance and operating costs
- Reduced asset downtime and increased asset availability
- Increased equipment life
- Continuous improvement of the maintenance program
- Documentation trail for maintenance decisions

RCM will save time and money spent on maintenance and will improve your equipment availability. In most cases, a positive return on investment for the analysis effort can be realized in weeks or months. RCM can be cost effectively applied to equipment in any stage of its life cycle.

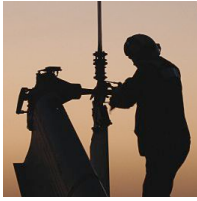
Virginia Beach, Virginia

3686 Hill Breeze Road
Virginia Beach, Virginia 23452
Phone: 757.463.1819
Fax: 757.463.0688

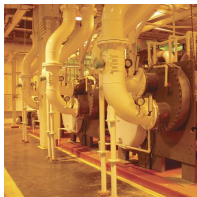
Jacksonville, Florida

4720 Salisbury Road, Suite 125
Jacksonville, Florida 32256
Phone: 904.493.6448
Fax: 904.880.2226

ASI Delivers RCM Support



ASI provides expert, flexible, and cost effective support for developing and implementing RCM-based maintenance programs. The **ASI** Team has extensive experience performing and implementing RCM analysis on a wide variety of systems, using several different processes and implementation methods. Working on behalf of military, government, and commercial customers, we have performed RCM analysis on weapon systems, industrial facilities, data centers, power plants, and manufacturing plant equipment.



Manufacturers, Government & Commercial Sectors All Benefit

ASI offers a variety of products and services to help your organization realize the benefits of RCM. OEMs can benefit from our experience and understanding of the government's RCM requirements on new systems. **ASI** can perform analysis faster, for less cost, and increase government satisfaction with the end product, compared to efforts performed in-house. Government activities can benefit from our experience with RCM for in-service systems through reduced maintenance costs and increased reliability and availability. Commercial organizations can achieve the benefits of RCM using our extensive knowledge of RCM on a broad spectrum of equipment with a process that does not require expensive software or licenses. Whether you need help implementing an in-house RCM program or help performing an analysis, we have the experience and tools to help you cost-effectively implement an RCM program.



RCM Analysis Services & Support

We understand there is no one best way to implement RCM to fit every situation. Our experience has shown that a number of factors can affect how best to approach RCM, including budgetary constraints, technical resources, data availability, organizational acceptance, availability of staff, and others. Our approach is to help customers find a solution that fits their needs and budget. Virtually any organization can derive benefit from RCM if the program is customized to fit the situation. To support this philosophy, **ASI** offers a variety of customizable analysis services:

- **Consulting and Mentoring**

ASI can provide highly experienced experts to help you set up an internal RCM program and provide mentoring of your personnel until they are ready to perform on their own.

- **RCM Facilitation**

Where a facilitated group approach analysis approach is required, **ASI** can provide experienced facilitators for the entire analysis or for limited time to help develop and train your staff.

- **Contract Analysis**

For customers that do not have the staff or desire to in-source analysis, **ASI** can provide experienced analysts to perform RCM. Our analysts have experience in a wide range of industries and are experts at working with customer's subject matter experts to ensure the analysis captures relevant internal experience.

- **Software Development and Integration**

ASI can develop custom software applications to support your specific analysis needs. We are experienced in developing web-based and desktop applications and integrating RCM programs with other applications such as CMMS and LSA databases.

- **CMMS and RCM Integration**

ASI can assist with the integration of RCM and CMMS programs, including setting up equipment hierarchies and failure coding systems to provide effective data for the RCM process and with the development of required maintenance job plans for generated by RCM. **ASI** can also develop software interfaces to provide for data flow between CMMS and RCM.

- **Maintenance Program Development and Implementation**

ASI can assist with using the results of RCM efforts to develop efficient maintenance programs. We have worked extensively with NAVAIR's Integrated Maintenance Concept (IMC) as well as other innovative maintenance concepts.



Training

ASI provides a variety of training options, including regularly scheduled classes and on-site courses. On-site courses can be tailored for a specific industry or program.

Training includes:

- Fundamentals of RCM Analysis – 3 Days
- RCM Executive Overview – 2 Hours
- IRCMS 6.3 Update Course – 1 Day
- RCM Implementation and Advanced Topics – 2 Days
- RCM Concepts Overview – ½ Day