



Continuously Pushing the Limits of Innovation, Technology and Conventional Thinking

The Comprehensive Solution to Implement CBM+

While significant effort has been spent developing technology for monitoring and recording asset performance, somewhat less effort has been spent developing the tools to analyze the data provided by these technologies, and still less effort has been invested in integrating decision support and business intelligence systems to turn the results of analysis of CBM+ data into actionable knowledge.

Andromeda Systems Incorporated (ASI) offers a comprehensive solution to capitalize on CBM+ technologies and enablers. Through a web-based, integrated data environment, we provide analytical, business intelligence, and planning tools that capture and transform data into actionable knowledge for sustainment of fleets and high value physical assets. Gain unprecedented insight into and understanding of past, present, and future equipment performance while containing costs and sustaining readiness.



iSuMO™ seamlessly integrates Reliability-Centered Maintenance (RCM) Analysis capabilities with maintenance planning and logistics, maintenance schedule optimization, lifecycle cost modeling, health monitoring, and other CBM+ enabling processes and technologies. Our solution provides the ability to collect data, perform analysis, and support critical business decisions using advanced analytical and decision support tools. Implementation time and costs are minimized through the direct integration with existing infrastructure and data sources.

- Gain Complete Visibility into Equipment Performance
- Achieve Maintenance Efficiency and Effectiveness
- Integrate Predictive Maintenance Approaches
- Implement the Optimal Mix of Maintenance Technologies
- Increase Availability
- Improve Reliability
- Minimize Downtime
- Reduce Cost of Ownership

Andromeda Systems Incorporated

Corporate Headquarters 641 Lynnhaven Parkway, Suite 200 • Virginia Beach, Virginia • 23452-7307

Offices Jacksonville, Florida • Lexington Park, Maryland • Havelock, North Carolina • San Diego, California

www.ANDROSYINC.com • 904.637.2061

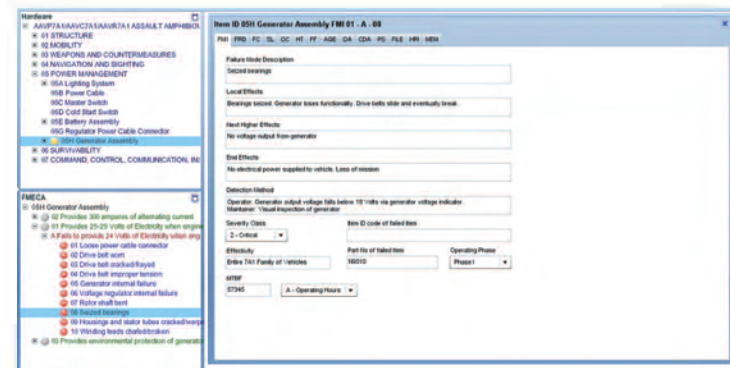


Through an integrated data environment providing a suite of supportability, business intelligence and decision support tools, iSuMO™ incorporates leading-edge technology that integrates CBM+ enablers with existing capabilities and infrastructure.

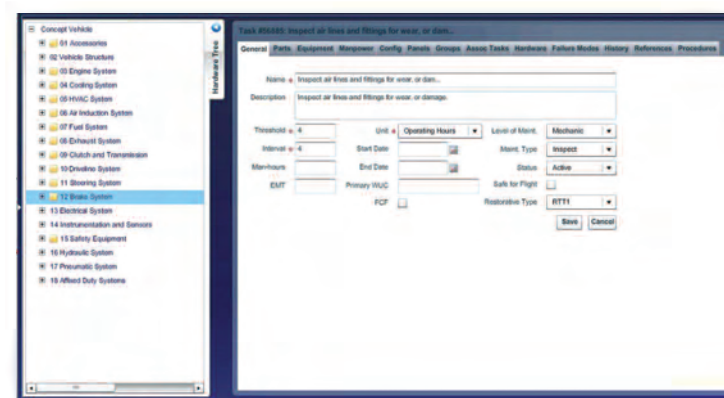
Our intelligent and integrated approach to CBM+ implementation provides comprehensive supportability management and performance optimization.

The system allows asset managers to turn data from disparate sources into information, and through the use of sophisticated analytical and business intelligence tools, turn that information into actionable knowledge.

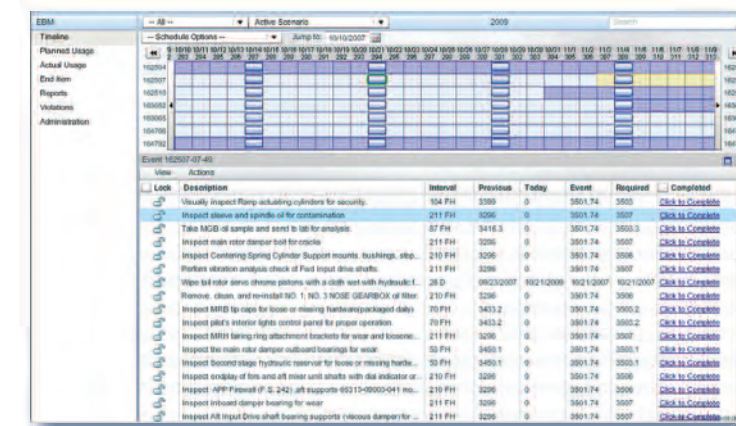
Through direct integration with virtually any other enterprise management system, this system provides unprecedented insight into the past, present, and future performance of in-service fleets and high-value assets.



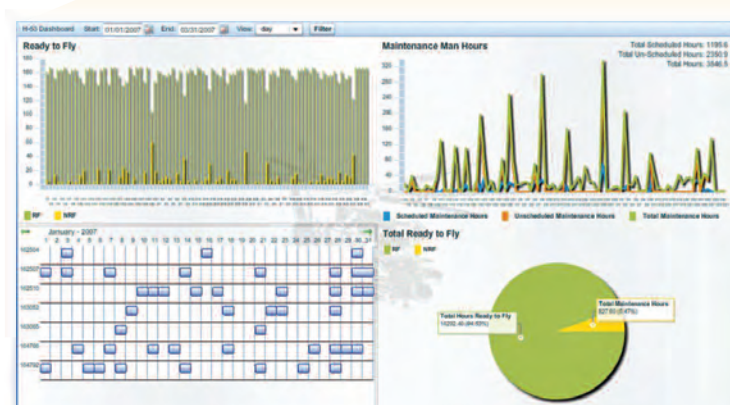
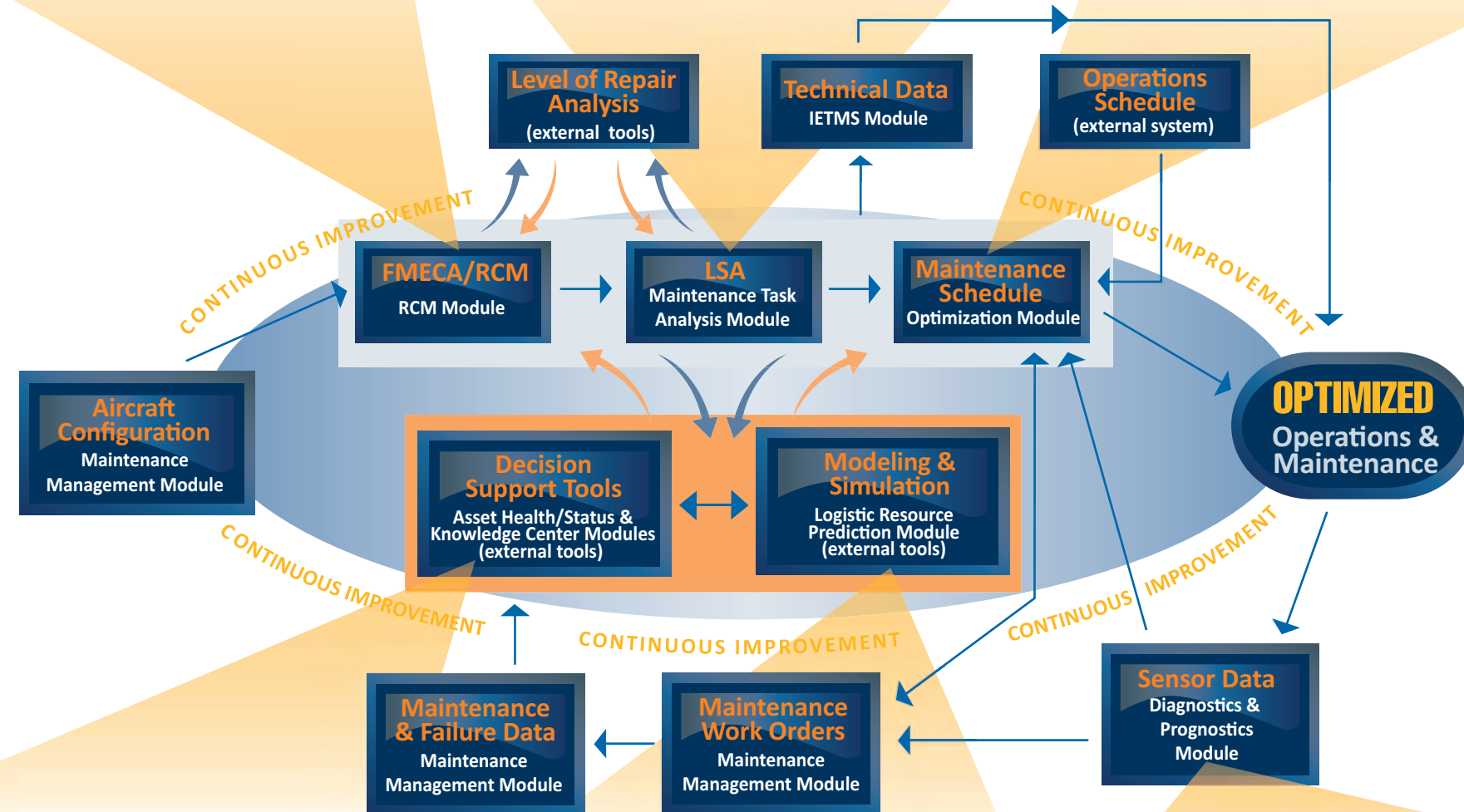
RCM Analysis provides optimum failure mitigation strategies to achieve required safety and availability at minimum cost.



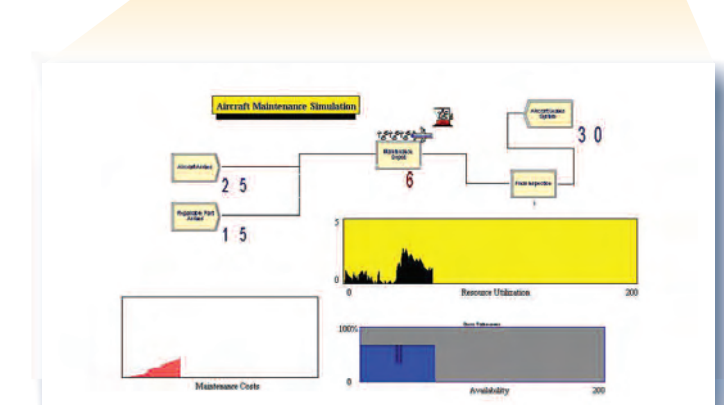
Maintenance Task Analysis identifies resources required to perform each preventive and corrective maintenance task.



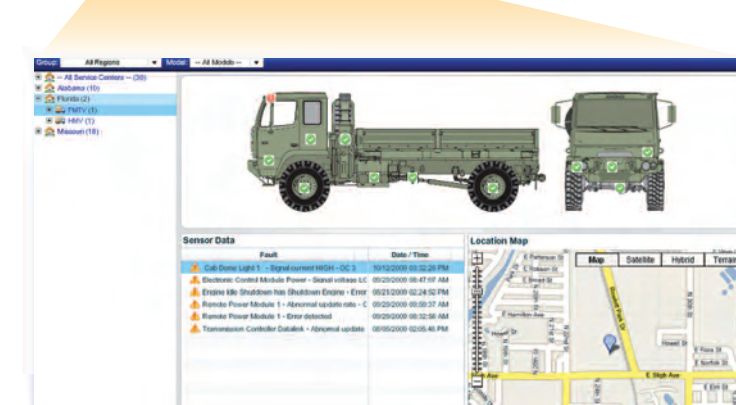
Minimize down time or cost by tracking and scheduling individual maintenance tasks based on each asset's unique operational requirements.



Advanced business intelligence and data analysis tools provide unprecedented insight into past, present, and future system performance and provide the ability to identify systemic improvements.



Modeling and Simulation predicts short- and long-term resource requirements for future operations allowing assessment of multiple operational scenarios.



Monitor asset health in near real time and track assets automatically.

The Data Environment & Tool Suite that **INTEGRATES** with Existing Infrastructure & External Systems

Internal Capabilities

- RCM Analysis
- Maintenance Planning
- Maintenance Scheduling Optimization
- Life-Cycle Logistics Planning and Prediction
- Statistical Analysis Tools
- Data Mining, Business Intelligence, Decision Support
- Asset Health and Visibility
- Action Tracking

External Integration

- Maintenance Management & Work Order Systems
- Configuration Management
- Diagnostics & Prognostics
- IETMS
- UID & Automated Asset Tracking



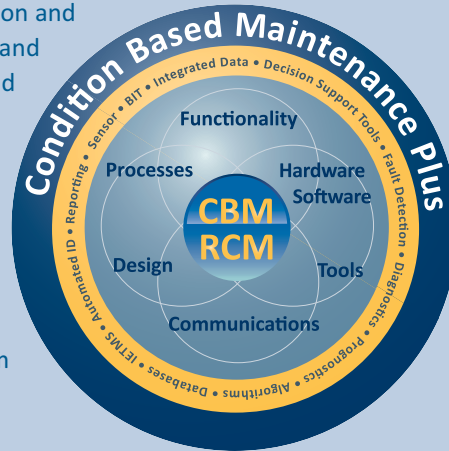
www.ANDROSYINC.com
904.637.2061

Understanding the Case for CBM+

A Systems Engineering Approach to Improved Reliability & Effectiveness

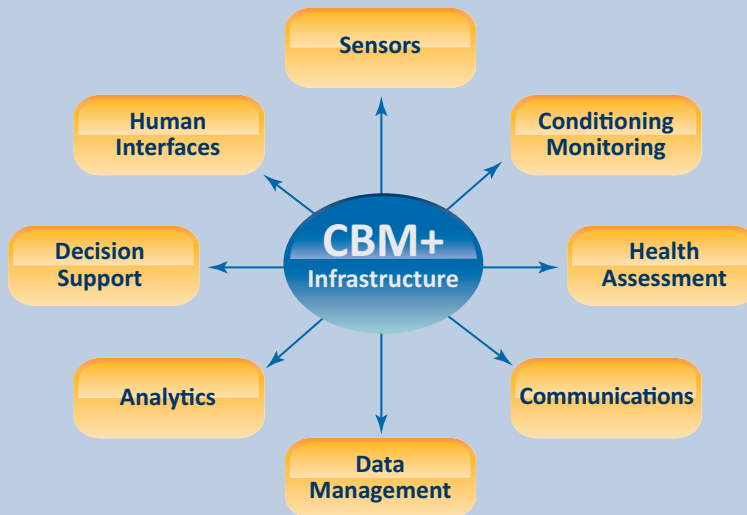
Condition Based Maintenance Plus (CBM+) is the application and integration of appropriate processes, technologies, and knowledge based capabilities to improve the reliability and maintenance effectiveness of DoD systems and components.

At its core, CBM+ is maintenance performed on evidence of need provided by RCM Analysis and other enabling processes and technologies. CBM+ uses a systems engineering approach to collect data, enable analysis, and support the decision-making processes for system acquisition, sustainment and operations.



RCM Analysis – The Key Enabler to CBM+

RCM Analysis is the key enabler to achieve planned material readiness, which is measured by the life-cycle sustainment outcome metrics of material availability, material reliability, ownership cost, and mean downtime. Continuous Process Improvement (CPI) analyzes performance and related processes on an ongoing basis, which is critical for RCM effectiveness across the life cycle. RCM, in turn, provides the means for accomplishing CPI of maintenance processes.



Andromeda Systems Incorporated provides tools and services to **Program Managers** and **Fleet Owners** to gain critical insights and system improvements to optimize operations, make better business decisions and achieve measurable cost savings. These benefits are provided through four *integrated* service areas: **Engineering, Maintenance & Logistics, Information Technology and Program Management & Acquisition Support.**

Andromeda Systems Incorporated

Corporate Headquarters 641 Lynnhaven Parkway, Suite 200 • Virginia Beach, Virginia • 23452-7307

Offices Jacksonville, Florida • Lexington Park, Maryland • Havelock, North Carolina • San Diego, California

www.ANDROSYSINC.com • 904.637.2061